

ARTE MUSEUM

ENG

J E J U



ARTE MUSEUM

QUICK LINK

ABOUT ARTE MUSEUM →

ETERNAL NATURE →

SCENT & SOUNDSCAPE →

VIEWING GUIDELINE →

MAP →

ARTE CAFE →

EXHIBITIONS →

VISIT INFORMATION →

ABOUT ARTE MUSEUM

ARTE MUSEUM JEJU is d'strict's first permanent immersive media art exhibition unveiled in Jeju Aewol district at the end of September 2020.

ARTE MUSEUM JEJU, which was unveiled by upcycling a majestic space formerly used as a speaker manufacturing factory, presents 16 diverse media art exhibitions created with light and sound under the concept of an island. The artworks, created around the theme of ETERNAL NATURE, provide a perfect immersive experience with visually striking elements, sensory sounds, and elegant fragrances. Take a moment to relax and step into the space of eternal nature that ARTE MUSEUM JEJU offers, leaving behind the tension of all senses.

Step into the world of **ETERNAL NATURE**,
available only at

ARTE MUSEUM ISLAND
J E J U

[Contents >](#)

ETERNAL NATURE

At ARTE MUSEUM, you can immerse yourself in an encounter with nature that goes beyond time and space through diverse media artworks themed 'ETERNAL NATURE.'

While it may initially seem that nature and the digital world are at odds, they share a fundamental attribute: eternity. Whether it is the perpetually blooming flowers brought to life by generative art technology or the timeless essence of nature expressed through distinctive spatial designs, we have crafted an experience that breaks free from the limitations of both space and time.

As you engage with this hyper-realistic immersion, you will find yourself intuitively connecting with nature, allowing you to savor moments of contemplation within its eternal embrace.

[Contents >](#)

SCENT

ARTE MUSEUM is infused with the essence of nature itself. To recreate the fragrance of nature within the exhibition space, we collaborated with Marianne Nawrocki Sabatier, a renowned perfumer and the Senior Professor at the Grasse Institute of Perfumery, located in Grasse, the heart of the French perfume industry. The natural scents, tailored to each artwork, harmonize with the visual and auditory beauty of ARTE MUSEUM, awakening our senses and guiding us into complete immersion.

SOUNDSCAPE

Soundscape is created by Music Director Yong-gyu Jang, a globally renowned composer with a stellar reputation for his award-winning work on the scores of more than 50 films and television shows including the critically acclaimed 'Space Sweepers' (2024), 'Train to Busan' (2016), 'The Good, the Bad, the Weird' (2008), and 'Tazza: The High Rollers' (2006). Jang is also the bassist and producer for the Korean Music Award-winning band Leenalchi. ARTE MUSEUM soundscape ranges from meticulously detailed and lifelike nature sounds to the evocative background music for the GARDEN exhibit. Jang's compositions are thoughtfully designed to seamlessly enhance the impact of each artwork.

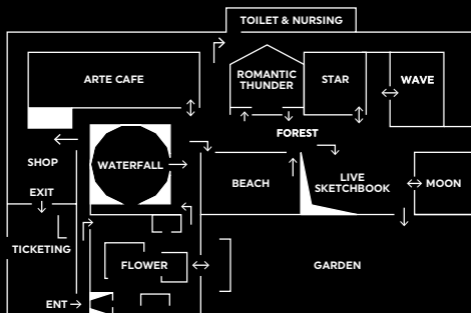
VIEWING GUIDELINE

This is a public museum for everyone.

Please adhere to the viewing guidelines of ARTE MUSEUM JEJU.

- There are no refunds after entry, and re-entry after exiting is not allowed.
- Children under 12 years old must be accompanied by a guardian for entry.
- Bringing in any food or drink into the exhibit hall except bottled water is prohibited (including gum and candy).
- All areas within the museum are non-smoking zones (including electronic cigarettes).
- Photography without flash is permitted, but commercial photography/videography is prohibited.
- When using selfie sticks/tripods, please be mindful of others' safety.
- CCTV cameras are installed/operated in key locations for customer safety and crime prevention.
- Disruptive behavior towards other visitors may result in expulsion.
- Please cooperate with on-site staff instructions regarding visitor safety and other related matters.

MAP



1. ARTE MUSEUM JEJU consists of 15 exhibition spaces and a ARTE CAFE.
2. Utilize the provided map to locate each exhibition space.
3. The exhibition is operated in a 'self-guided' basis. Please enjoy the exhibition in the order you prefer.
4. The GARDEN features three media artworks continuously played under the themes of 'Jeju' 'Masterpieces,' and 'Cultural heritage' for 40 minutes.
5. The restroom is located next to 'ROMANTIC THUNDER'.
6. Once you exit, re-entry will not be permitted.

ARTE CAFE

ARTE CAFE

Enjoy a magical time on a table at ARTE CAFE.



A feast of live garnish expressed with media art
on attractive drink and dessert menus.
Enjoy the Jeju-themed sweet relaxation on a table.

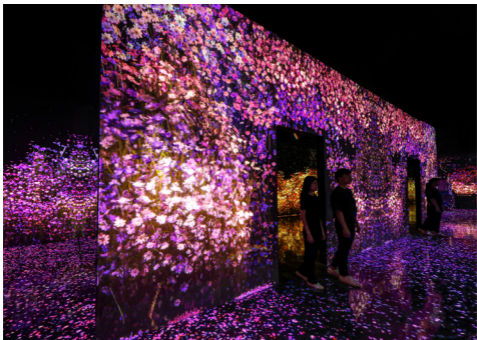
[Contents >](#)

EXHIBITIONS

FLOWER

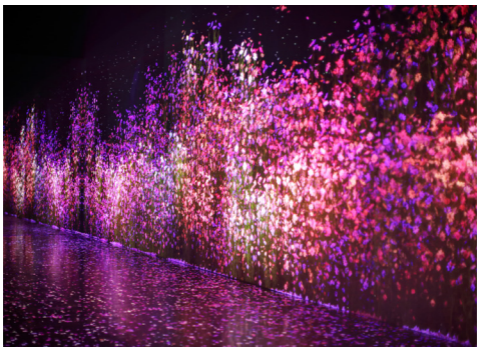
JOY OF LIFE BY THE INFINITE SYMPHONY OF PETALS

Remember and cherish unforgettable moments amidst the sweet flower breeze and the gentle petal rain. The infinitely stretched space with mirrors and media art conveys the evermore, limitless vitality of flowers.



FLOWER COSMOS

Introducing Cosmos, the embodiment of harmony and the universe. As the wind blows, its petals burst into vibrant hues and gain strength, while the constant cycle of Cosmos and wind recreates a universe anew and orderly.



EXHIBITIONS



FLOWER CAMELLIA UNDERWATER

THE ENIGMATIC AND ENDURING VITALITY OF WATER.

Experience the mesmerizing spectacle of camellias continuously blooming underwater, captivating observers like an enchanting fantasy.



FLOWER CAMELLIA ICE

VITALITY OF LIFE BURSTING THROUGH ICE

Feel the resilience of camellia blooming endlessly through solid ice, emitting infinite vitality.

[Contents >](#)

EXHIBITIONS



FLOWER ODYSSEY

THE SAGA OF FLOWERS

Venture into a world where the subtle evolution of a blossoming flower unfolds in a timelapse sequence. Encounter the flower's history anew through the shifting colors of its petals, and watch as the room transforms with each distinct blossom that comes into focus.

[Contents >](#)

EXHIBITIONS

WATERFALL

BOUNDLESS EXPANSION OF MAJESTIC MEDIA WATERFALL

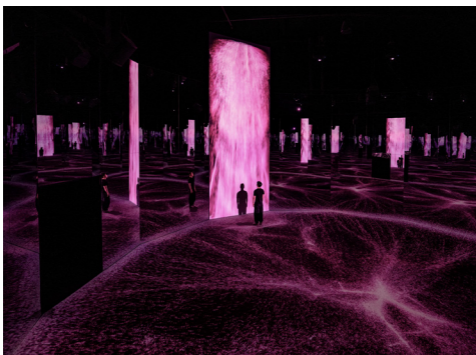
Immerse yourself in the waterfall of all matter in this surreal space.

A magnificent media waterfall pouring from 8 meters above unfolds infinitely through the 14-sided mirrors, guiding you through a journey into the majestic space.



WATERFALL PINK SAND

Witness a shimmering waterfall of sand that bathes the world in pink hues. The unbridled, flowing nature of the sand engenders a surreal waterfall experience unlike any other.



EXHIBITIONS

BEACH

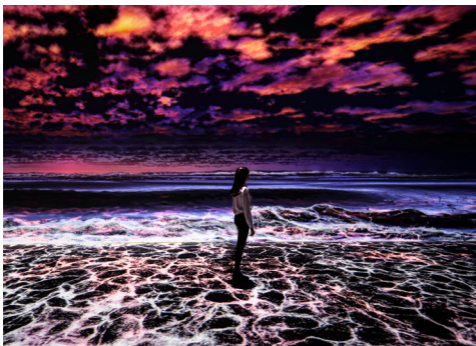
ENDLESS SURREAL BEACH

Walk along the ocean filled with the movement and sound of waves and enter a space of thought and enlightenment. The endlessly stretched beach reflected in the mirrors creates our own sea of digital media.



BEACH CLOUD

Catch a glimpse of this magnificent beach created by an abundance of ever-changing and luminous clouds. Its spectacular beauty goes beyond the horizon.



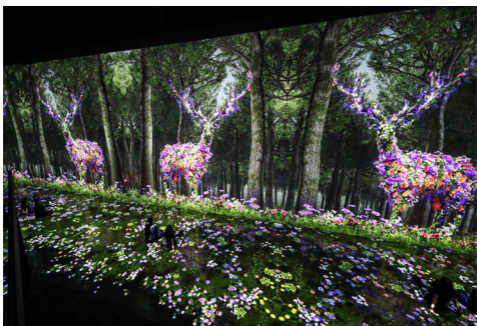
EXHIBITIONS



ROMANTIC THUNDER

A ROMANTIC MOMENT UNVEILED BY FIREWORKS

When lightning strikes from the clouds to the earth, it illuminates a mysterious world unknown. A surreal landscape unfolds, where pink clouds intermingle with colorful creatures in a seamless symphony.



FOREST

SACRED FOREST OF MYSTIC SPIRITS

Meet the mystical spirits living in this sacred and untouched forest. Stroll through the land of healing and restoration, protected by the spirits of water, wind, earth, and fire.

[Contents >](#)

EXHIBITIONS

LIVE SKETCHBOOK

CREATING A WORLD WITH MY OWN DRAWING

Bring your drawings to life. The colorful animals you create will come alive and fill the grand nature inside the widescreen.



LIVE SKETCHBOOK BAMBOO FOREST

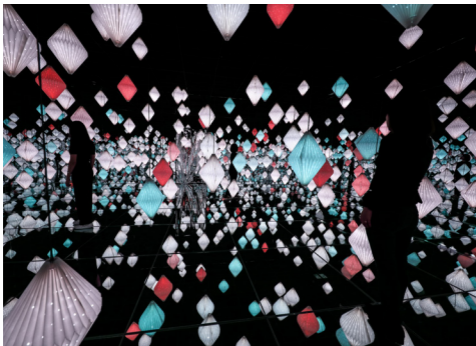
Enter a mystical bamboo forest shrouded in foggy mountains. Witness mysterious creatures awaking and embarking on a fantastical journey, each one with its own unique color and character.

EXHIBITIONS

STAR

FEAST OF STARLIGHT MADE WITH PAPER ART

Enjoy a feast of shining lights between paper art and music. Step into the center of the universe surrounded by starlight while the fete of paper art illuminates an infinitely stretched room of mirrors.

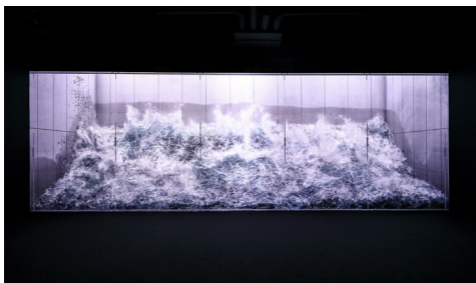


STAR MILKY WAY

Take a journey through the Milky Way and become a part of cosmic wonder. Follow the stream of starlight across a space full of beautiful stars to reach the astonishing secrets of the universe.

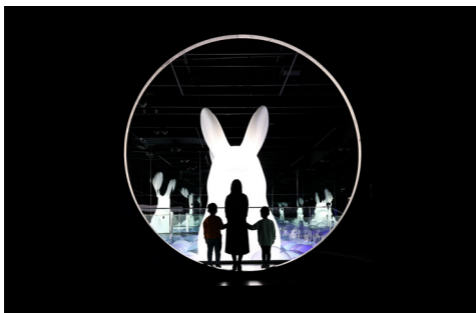


EXHIBITIONS



WAVE

Entrapped, enormous, gushing wave. A colossal wave looms over spectators from within a giant glass tank, extended with an anamorphic technique, before finally crashing against the glass wall. Viewers can experience the paradoxical resonance of the wave as it constantly arises and seemingly overflows, only to crash into foam right before their eyes. Initially showcased in Seoul's Samseong-dong area in 2020 by the digital design company d'strict, WAVE brings the raw power of Mother Nature to the heart of the city center, offering solace and comfort to countless individuals during the pandemic.



MOON

ENCOUNTER WITH A RADIANT MOON RABBIT

Meet the giant moon rabbit. Sitting under the moonlight that stretches out infinitely through the mirror, a giant 4-meter-tall rabbit awaits a play date.

EXHIBITIONS

GARDEN

GARDEN OF LIGHT CULTIVATED BY GIGANTIC MEDIA ART

A series of monumental media art will transform your surroundings into a new place. Immerse yourself in this gorgeous combination of light and sound. Take a stroll, relax, and immerse yourself in art in this splendid and welcoming garden.

CURRENT EXHIBITION #1



GARDEN JEJU ISLAND IN THE GARDEN OF LIGHT

Strolling sunlit paths while listening to the Island's whispers, enjoying Jeju's scenery through contemporary architecture and Il-hwa Hong's depictions of its vibrant nature, one discovers a new Jeju in imagination.

ILHWA HONG is a painter who explores nature. He has woven his experiences of forest life in Gotjawal, Jeju, into his works.



EXHIBITIONS

CURRENT EXHIBITION #2



GARDEN THREADS OF CONNECTION

This special exhibition highlights the value and legacy of national heritage under the theme of "Connection." It conveys the message of continued enjoyment to share the value of national heritage so that its beauty is connected further and longer. The cultural heritage, intangible cultural heritage, and royal palaces, brought to life through 3D assets of national heritage, are transformed into mesmerizing media art, leaving a lasting impression.

[Contents >](#)

EXHIBITIONS

CURRENT EXHIBITION #3



GARDEN LIGHT OF MASTERPIECES

Immerse yourself in the masterpieces at the Garden of Light. Enjoy a moment of artistic reflection with some of the most iconic masterpieces in Western art history, from the works of Renaissance artists to those of Symbolists.



[Contents >](#)

VISIT INFORMATION

VISIT INFORMATION

Opening Hours: 10:00 - 20:00 (Monday-Sunday)

Last Admission: 19:00 PM

Exhibition Period: Open year-round

LOCATION

478 Eorimbi-ro, Aewol-eup, Jeju-si, Jeju-do

 KR.ARTEMUSEUM.COM/JEJU

 [INSTAGRAM.COM/@ARTEMUSEUM_JEJU](https://www.instagram.com/@ARTEMUSEUM_JEJU)

 [FACEBOOK.COM/@ARTEMUSEUM.KOREA](https://www.facebook.com/@ARTEMUSEUM.KOREA)

CREATED BY

d'strict

Contents >